



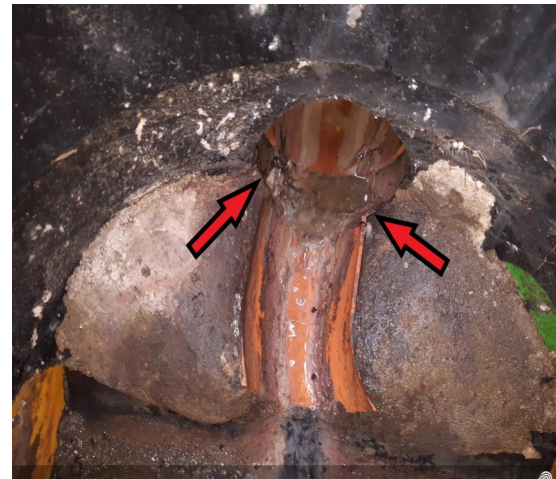
Quality Alert

**MORGAN
SINDALL**
CONSTRUCTION

Defective Inspection Chamber—Wigan Pool

We received a defect regarding a blockage in a drain at Wigan which caused the internal foul pipe in the basement to burst.

The cause of the blockage was a 100mm DIA benched pipe was set against the flow direction of the main foul and not fully connected to the 150mm internal pipe. (see arrows below) This caused any debris to snag on the reduced sides as shown by the arrows in the first photo and over time cause a blockage that led to the pipe work in the basement to burst and spill foul waste within the building and over swimming pool equipment and building plant.



We rectified the issue using a 150mm clay radius channel connecting the inspection chambers inlet and outlet as 1 continuous run, this reduced the chance of debris build up and aided the foul waste to run through the chamber as expected.



Everyone has the right to be
100% Safe